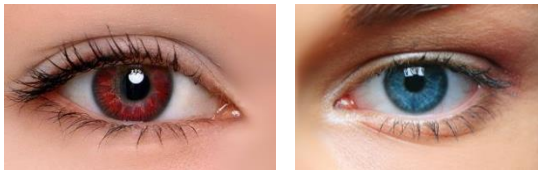


HUMAN GENETIC TRAITS



INTERLOCKING FINGERS: DOMINATE → LEFT THUMB ON TOP



EYE COLOR: DOMINANT → BROWN EYES (ALL OTHER COLORS ARE RECESSIVE)



EAR LOBE: DOMINATE → PENDULOUS LOBES



FRECKLES: DOMINATE → HAVING FACIAL FRECKLES



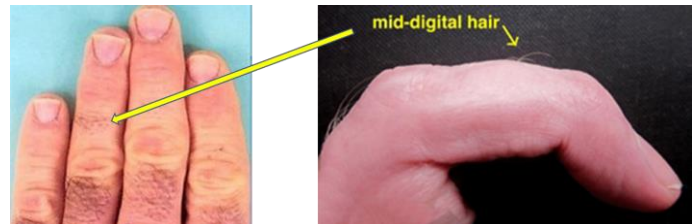
DIMPLES: DOMINATE → HAVING FACIAL DIMPLES



WIDOW'S PEAK: DOMINATE → "V"—SHAPED HAIR LINE



HAIR WHORL: DOMINATE → CLOCKWISE TURNS



MID-DIGITAL HAIR: DOMINATE → HAIR PRESENT



BIG TOE: DOMINATE → BIG TOE IS SHORTER THAN 2ND TOE



HAIR BLAZE (BLACK OR WHITE STREAK): DOMINANT → PRESENCE OF A PATCH OR STREAK



TONGUE ROLLING: DOMINATE → U-SHAPE CURVE



ARM FOLDING: DOMINATE → LEFT ARM OVER RIGHT ARM



CHIN CLIFT (DIMPLING): DOMINANT → ABSENCE OF "DIMPLE"