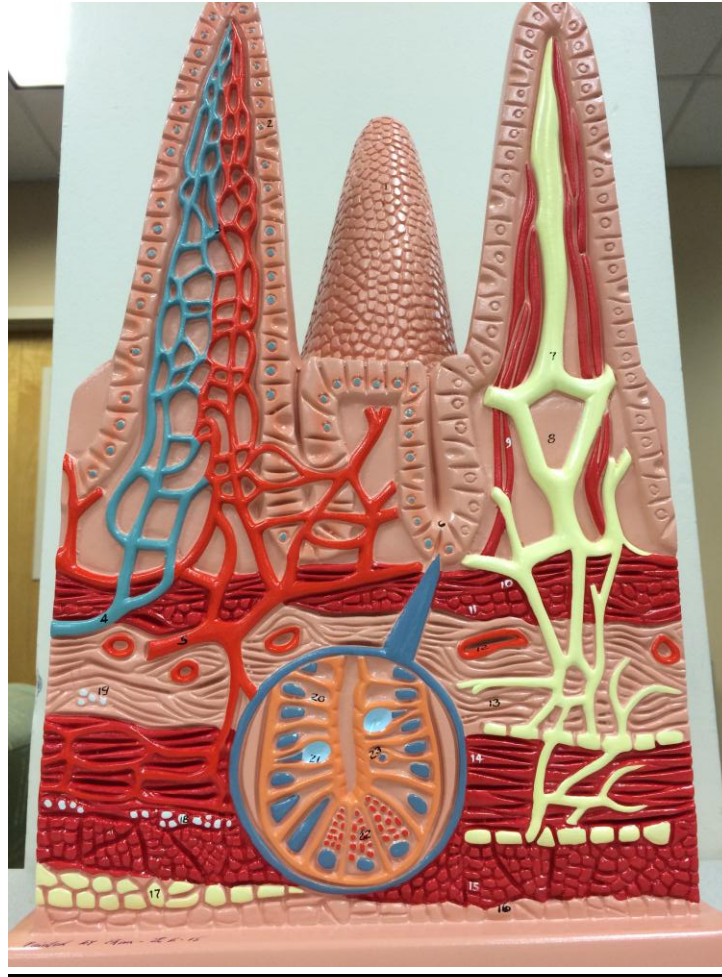


## Intestinal Villi Model Key:



- 21. Goblet cell
- 1. Villus
- 7. Lacteal
- 13. Submucosa
- 6. Intestinal crypt (of Lieberkuhn)
- 16. Serosa
- 15. Muscularis external (longitudinal muscle)
- 14. Muscularis external (circular muscle)
- 10/11. Mucosa (muscularis mucosae)
- 3. Blood capillaries
- 2. Absorptive cells